



KENTUCKY CENTER

THEATER LOCATION

501 West Main Street, Louisville, KY 40202

MAIN ADMINISTRATION

Ph. 502-566-0100 Fax 502-566-7205

CENTER STAFF

President: **Kim Baker** 502-566-5112

Facility Rental: **Rachel Cummings** 502-566-5142

Facilities: **Eric Spears** 502-566-5220

Front of House: **Lauren Metts** 502-566-5241

Ticketing Director: **Curtis Schneider** 502-566-5119

Access Services: **Stacy Ridgway** 502-566-5211

THEATER STAFF

Director of Production Services: **Peter Bell** 502-566-5131

Production Manager: **Keith Kimmel** 502-566-5173

Production Fax: 502-566-7178

Seating capacity: Flexible, up to 139



Charges for technical equipment to be determined by lease agreement.
Any costs incurred due to outside rentals are subject to a 10% administrative fee.

THEATER

Black box theater, 42' x 37'

Floor is tongue and groove maple, stained black

RIGGING SYSTEM

Fixed pipe grid, approximately 5'x5' squares
Electrical circuits spaced evenly throughout

SOFT GOODS

14 - Black velour legs, 8' wide x 15' long
4 - Black velour legs, 4' wide x 15' long
2 - Black velour border, 8' wide x 7' 8" high
1 - Black velour border, 40' wide x 4' 2" high
1 - Cyclorama, 30' x 15'
1 - Black shark-tooth scrim, 25' x 15'
1 - White shark-tooth scrim, 21' x 15'
1 - Movie screen 10' x 8'

DRESSING ROOMS

Green room and two dressing rooms, (4 and 5 person)
located upstairs in backstage area.

Sink and toilets are located with the backstage area
on the theater level.

Additional dressing room space is available on the theater
level across the hall in the MeX workshop.

SEATING

- * Flexible riser system
- * Platforms available in 7" and 14" heights
- * Platforms are 3' deep in various lengths
- * Up to 139 cushioned, hard-backed chairs w/arms
- * The six configurations on the Seating Chart are pre-approved and choice of one of those arrangements or a proposed and approved alternative must be made in advance

STORAGE

Storage in or near the MeX is severely limited therefore a plan for storage of scenery, props, costumes, etc. must be approved by the MeX Theater Manager prior to load-in

The light storage room adjacent to the theater, 10' x 11' is available as backstage or storage space. Limited additional storage space may be available in the MeX workshop.

LOADING

Options for loading in and out of the MeX vary depending on other events in the building and plans to load in or out of the theater must be made in advance. The Theater Manager can advise various options depending on specific circumstances. Large scenic units may be difficult through the available entrances and hallways, some with only 3' door openings. The freight elevator (7' 3" wide x 9' deep x 7' 4" high) is available to move scenery and equipment to the 4th floor.



KENTUCKY
CENTER



ELECTRICS

96 circuits, 2.4kw each, are space throughout the grid. Connector type is 20 amp stage pin
120 volt switched electrical receptacles are spaced throughout the grid and can be controlled from the booth.

CONTROL

ETC Element with two monitors. Console may be moved to a production table in the theater during rehearsals.

INSTRUMENTS

Instrument	Quantity	Instrument	Quantity
Source Four 26 Degree (375 watt)	12	6" Fresnelites (750 watt)	12
Source Four 36 Degree (375 watt)	48	Mini 10 with barn doors (300 watt)	8
Source Four 50 Degree (375 watt)	12	Coda CYC Light (500 watt)	12
Source Four PARS, Wide (575 watt)	12		

AVAILABLE ACCESSORIES

Gel frames, safety cables, template holders, 5 drop-in iris units, 6 barn doors for Fresnel units
Alternate lenses for Source Four PARS

Cut gel collected in the MeX gel file is available for use. Some uncut Rosco gel is available for purchase on site but the collection is far from complete.

AUDIO

House audio equipment is available for sound effects and playback and is not intended for amplification of live music.

SPEAKERS

4 JBL Cabaret loudspeakers
1 hot-spot speaker

MICROPHONES

Shure SM58

CONSOLE

Mackie 1642 VLZ Pro 16 channel mixer

BOOTH MONITORS

2 JBL bookshelf monitors

PLAYBACK

Sony 5-disc CD changer
Denon DVD single disc player
MacBook Pro equipped with Q-Lab basic software (advanced features for cueing audio, MIDI and projections are available through rental licenses) M-Audio ProFire 610; may be moved to the theater during rehearsals.

INTERCOM

ClearCom system with 5 headsets and belt packs.



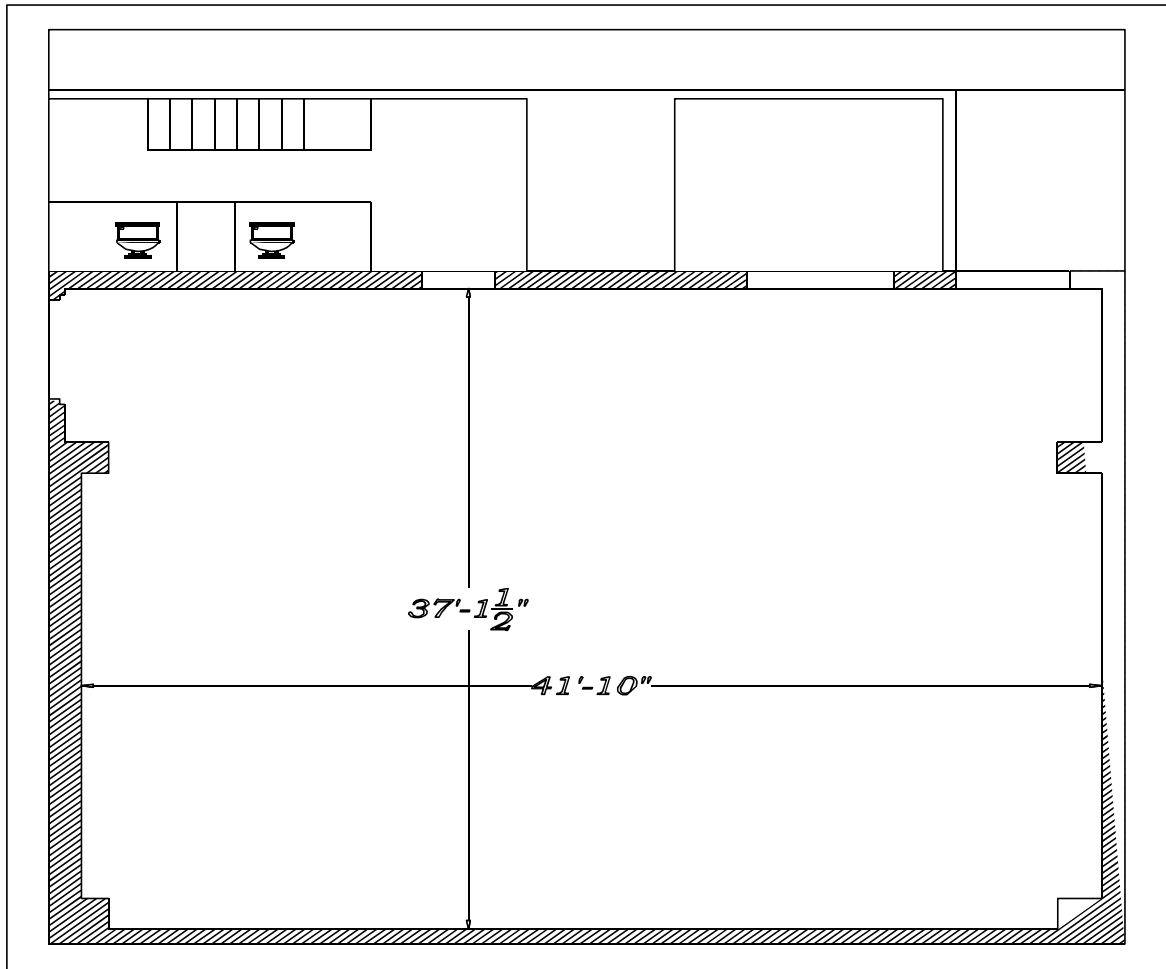
PAGING

Bogen paging system feeds to all backstage areas.

ASSISTIVE LISTENING

Sound Associates portable assistive listening device is available for use in the MeX upon patron request.

Kentucky Center equipment (including additional audio equipment, pianos, etc.) not listed in this tech pack may be rented upon request at standard rental rates and is subject to availability. The Kentucky Center will not provide any furniture to be used on stage, and does not have any scenery available to rent.



Drawing is not to scale



KENTUCKY
CENTER



Pre-Approved Seating Set-ups

