



**BROWN  
THEATRE**

**W.L. LYONS BROWN THEATRE TECH PACK**

315 West Broadway  
Louisville, Kentucky 40202-2105

**THEATRE STAFF**

Booking: Stacey Griffin Hallahan (502) 562-0100 x403  
Event Management: Maggie Patten (502) 562-0100 x302  
Production Operations: David Doukas (502) 562-0100 x601  
Management Company Kentucky Performing Arts: (502) 562-0100  
Box Office Kentucky Center: (502) 584-7777

**UNIONS**

IATSE Local #17 B.A. Robert Ferree: (502) 587-7936  
TWU Local #897 Libby Murner: (502) 435-9617

**OTHER NUMBERS**

Security: (502) 566-5128

**Seating Capacity**

|     |           |     |         |             |              |
|-----|-----------|-----|---------|-------------|--------------|
| 824 | Orchestra | 557 | Balcony | <b>1381</b> | <b>Total</b> |
|-----|-----------|-----|---------|-------------|--------------|

**\*\*60 additional seats for orchestra pit extension \*\***

**1441 Total (16 Accessible Locations)**

**BROWN STAGE**

200 seated      350 standing



## W.L. LYONS BROWN THEATRE TECH PACK

|                                |  |  |
|--------------------------------|--|--|
| <b>Fly System</b>              | House Curtain<br>Operates as Guillotine from SL Locking Rail or Deck |  |
| <b>Rigging System</b>          | <i>Single-Purchase Counterweight</i>                                 |  |
|                                | 51   | Line Sets on 8" Centers from Smoke Pocket<br>Battens are 63' long; High Trim @ 61'-6"; Low Trim @ 4'-0". |
| <b>Permanent Installations</b> | 5  | Onstage Electrics located @ 4'-2", 10'-10", 17'-6", 24'-2", and 30'-2"                                   |
|                                | 5  | Flown Orchestra Shell Ceiling & Back wall @ 5'-6", 12'-10", 20'-2", 27'-6", and 32'-2"                   |

\*\*\*MOVING PIECES MUST NOT GO DIRECTLY UP OR DOWN STAGE OF PERMANENT SHELL (SEE LINESET ROSTER)\*\*\*

|                             |   |                             |              |
|-----------------------------|---|-----------------------------|--------------|
| <b>Soft Goods Inventory</b> | 1 | Red Velour Act Curtain,     | 29'H x 65'W- |
|                             | 1 | Red Velour Main Valance     | 12'H X 63' W |
|                             | 6 | Black Velour leg sets       | 30'H x 15'W  |
|                             | 6 | Black Velour Border panels  | 15'H x 60'W  |
|                             | 2 | full stage 2 panel blackout | 30'H x 60'W  |
|                             | 1 | White Muslin cyclorama      | 30'H x 60'W  |
|                             | 1 | Black Sharks Tooth Scrim    | 30'H x 60'W  |

|                |   |   |
|----------------|---|---|
| <b>On Deck</b> | 1 | Trap in Deck 2'-0" x 4'-0" located<br>@ 15'-0" CS |
|----------------|---|---|

|                                  |  |
|----------------------------------|--|
| <b>Orchestra Pit/Stage Apron</b> | Manual- @ Stage Level, Audience Level or removed for Pit<br>(6'-10" below stage level) |
|----------------------------------|--|

**F.O.H. RIGGING**      Points @ 14' 6" & 19' 6" left and right of center, 20' DS of smoke pocket.  
 \*\*\*\* 2000lbs MAX. ACROSS THE 2 POINTS LEFT AND 2000LBS MAX. ACROSS THE 2 POINTS RIGHT\*\*\*\*

|                     |   |
|---------------------|---|
| <b>Loading Dock</b> | Loading Door 10'-0" High x 8' Wide<br>Located on Backstage Wall SL<br>Dock is Street Level Accessed by an Alley<br>Two Trucks Can Unload at the Same Time, Back to Back |
|---------------------|---|

|                 |  |
|-----------------|--|
| <b>Wardrobe</b> | 2      Washers   |
|                 | 2      Dryers  |
|                 | *Located in SL Greenroom in Basement Accessed by Stairs SL |

|                       |  |
|-----------------------|--|
| <b>Dressing Rooms</b> | 2      Star Rooms, First Floor, One Accessible<br>*The Above have Private Showers and Toilets. All Dressing Rooms Are Located SR |
|                       | 3      Suites, Second Floor, Shared Shower and Toilet, One w/ Private Toilet   |
|                       | 1      Chorus, Third Floor, Two Toilets and Two Showers  |
|                       | 1      Chorus, Fourth Floor, Two Toilets and Two Showers   |

|                                    |   |
|------------------------------------|---|
| <b>Storage and Rehearsal Areas</b> | Limited Storage Capacity. Rehearsal Spaces are the Stage and the Brown Theatre Rehearsal Hall |
|------------------------------------|---|

## W.L. LYONS BROWN THEATRE TECH PACK

### ELECTRICS

|                    |   |                                   |
|--------------------|---|-----------------------------------|
| <b>Company</b>     | 1 | 600-Amp, 3-Phase, USR             |
| <b>Connections</b> | 2 | 400-Amp, 3-Phase, USR             |
|                    | 1 | 100-Amp, 3-Phase, USR Shore Power |
|                    | 1 | 200-Amp, 3-Phase, DSL Isolated    |

**Lighting Control** ETC ION w/ 2x20 fader wing

**Dimmers** 350 ETC Sensor 2.4 dimmers

**Fixtures**

|    |                                      |
|----|--------------------------------------|
| 12 | ETC 14° Source Four Ellipsoidal 575w |
| 71 | ETC 19° Source Four Ellipsoidal 575w |
| 52 | ETC 26° Source Four Ellipsoidal 575w |
| 37 | ETC 36° Source Four Ellipsoidal 575w |
| 27 | ETC Source Four PAR 575w             |
| 24 | Strand 2Kw Fresnelite 8"             |
| 24 | Altman Single-Cell Cyclight          |
| 10 | ETC 10° Source Four Barrels          |
| 4  | ETC 50° Source Four Barrels          |

\*Instrument rental does not include gel.

**Follow Spots** 2 Colortran 2kw  
\*Throw to Stage is 70 Feet.

## W.L. LYONS BROWN THEATRE TECH PACK

### AUDIO

#### House

##### Sound System

Meyer Sound MSL-4 Left and Right Orchestra level coverage (3 per side)  
Meyer Sound CQ1 Left and Right Clusters (2 per side) @ 17' off deck- balcony coverage  
Meyer Sound 650P Subs (2per side)  
Meyer Sound UPM-1P front fill

##### FOH Console

Yamaha CL5  
2- RIO 3224 engines  
1- Ramtech audio stage splitter

##### Monitor Console Monitors

Yamaha QL5  
(4) Meyer Sound USM-100P  
(4) Meyer Sound CQ2 (permanently flown side-fills)

##### PA Processing

1 Meyer Galileo Callisto  
2 KT 31 band EQ's  
2 Presonus 8 channel comp/limit/gate  
1 TC Electronic M-ONE effects processor  
1 TC Electronics M-TWO Delays  
2 TC Electronics M 2000 effects processor

##### Accessories

full microphone, stand and cabling package

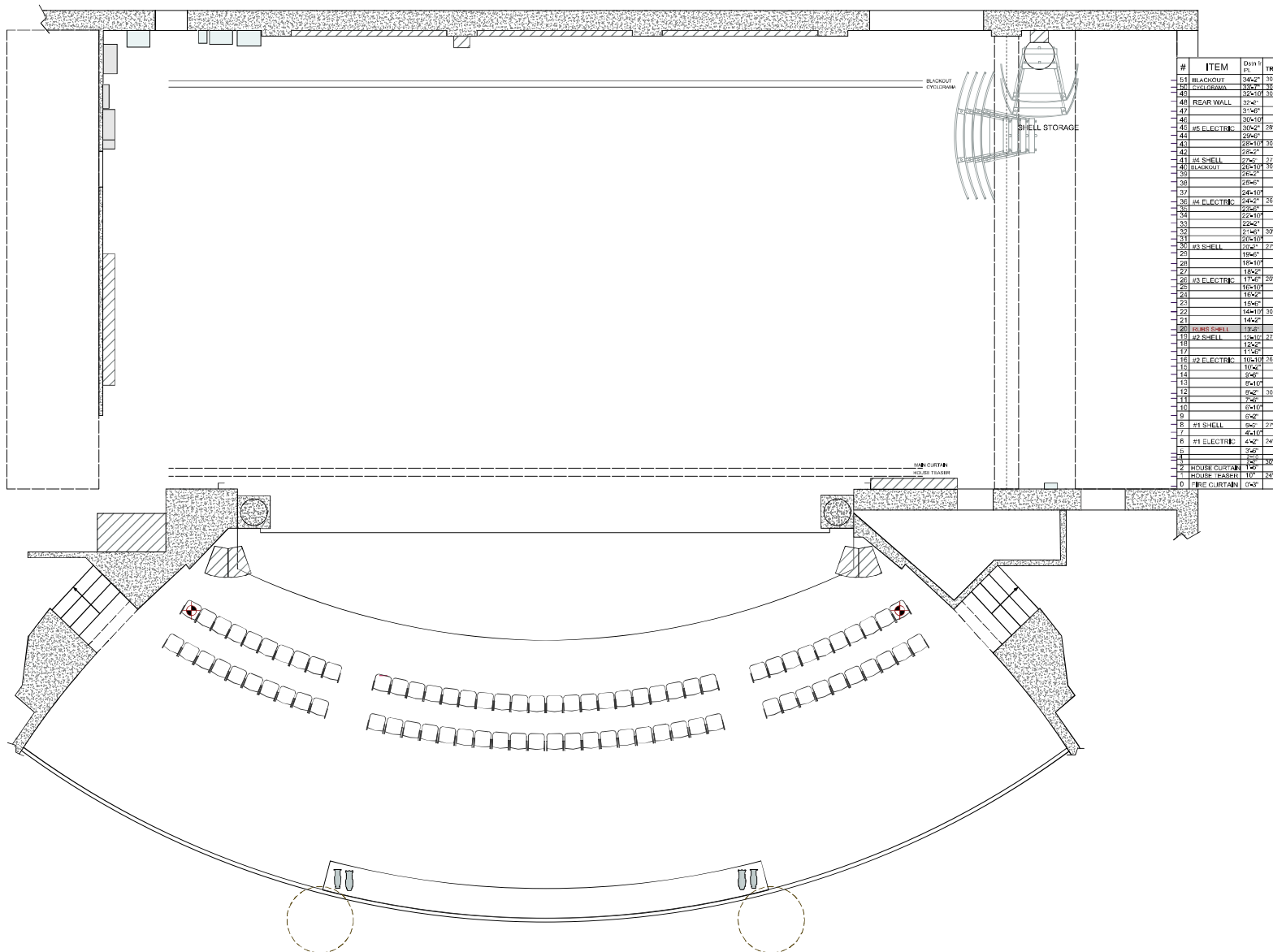
##### Communications

1 Clear Com w/ two Channels  
8 Single-Muff Headsets

IR assistive listening system

## Line Roster for W.L. Lyons Brown Theatre

| LINE | DISTANCE  | HOUSE HANG                          | NOTES                |
|------|-----------|-------------------------------------|----------------------|
|      | 0' - 0"   | PLASTER LINE                        |                      |
|      | 0' - 3"   | FIRE CURTAIN                        | Permanent            |
| 1    | 0' - 10"  | HOUSE TEASER                        | Permanent            |
| 2    | 1' - 6"   | HOUSE CURTAIN                       | Doubles as #1 Border |
| 3    | 2' - 2"   | #1 LEGS                             | House Hang Position  |
| 4    | 2' - 10"  |                                     |                      |
| 5    | 3' - 6"   |                                     |                      |
| 6    | 4' - 2"   | #1 ELECTRIC (40 CIRCUITS) permanent | In trim 24'          |
| 7    | 4' - 10"  |                                     |                      |
| 8    | 5' - 6"   | **#1 ACOUSTICAL SHELL OVERHEADS**   | Permanent            |
| 9    | 6' - 2"   |                                     |                      |
| 10   | 6' - 10"  |                                     |                      |
| 11   | 7' - 6"   | #1 BORDER                           | House Hang Position  |
| 12   | 8' - 2"   | #2 LEG SR                           | House Hang Position  |
| 13   | 8' - 10"  | #2 LEG SL                           | House Hang Position  |
| 14   | 9' - 6"   |                                     |                      |
| 15   | 10' - 2"  |                                     |                      |
| 16   | 10' - 10" | #2 ELECTRIC (34 CIRCUITS) Permanent | In trim 26'          |
| 17   | 11' - 6"  |                                     |                      |
| 18   | 12' - 2"  |                                     |                      |
| 19   | 12' - 10" | **#2 ACOUSTICAL SHELL OVERHEADS**   | Permanent            |
| 20   | 13' - 6"  | <b>RUBS SHELL</b>                   | <b>DO NOT USE</b>    |
| 21   | 14' - 2"  | #2 BORDER                           | House Hang Position  |
| 22   | 14' - 10" | #3 LEGS                             | House Hang Position  |
| 23   | 15' - 6"  |                                     |                      |
| 24   | 16' - 2"  |                                     |                      |
| 25   | 16' - 10" |                                     |                      |
| 26   | 17' - 6"  | #3 ELECTRIC (34 CIRCUITS) Permanent | In trim 26'          |
| 27   | 18' - 2"  |                                     |                      |
| 28   | 18' - 10" |                                     |                      |
| 29   | 19' - 6"  |                                     |                      |
| 30   | 20' - 2"  | **#3 ACOUSTICAL SHELL OVERHEADS**   | Permanent            |
| 31   | 20' - 10" | #3 BORDER                           | House Hang Position  |
| 32   | 21' - 6"  | #4 LEGS                             | House Hang Position  |
| 33   | 22' - 2"  |                                     |                      |
| 34   | 22' - 10" |                                     |                      |
| 35   | 23' - 6"  |                                     |                      |
| 36   | 24' - 2"  | #4 ELECTRIC (30 CIRCUITS) Permanent | In trim 26'          |
| 37   | 24' - 10" |                                     |                      |
| 38   | 25' - 6"  | #4 BORDER                           | House Hang Position  |
| 39   | 26' - 2"  |                                     |                      |
| 40   | 26' - 10" | MIDSTAGE BLACKOUT                   | House Hang Position  |
| 41   | 27' - 6"  | **#4 ACOUSTICAL SHELL OVERHEADS**   | Permanent            |
| 42   | 28' - 2"  |                                     |                      |
| 43   | 28' - 10" | #5 LEGS                             | House Hang Position  |
| 44   | 29' - 6"  |                                     |                      |
| 45   | 30' - 2"  | #5 ELECTRIC (24 CIRCUITS) Permanent | In trim 28'          |
| 46   | 30' - 10" |                                     |                      |
| 47   | 31' - 6"  |                                     |                      |
| 48   | 32' - 2"  | **FLOWN REAR WALL**                 | Permanent            |
| 49   | 32' - 10" | #6 LEGS                             | House Hang Position  |
| 50   | 33' - 7"  | WHITE CYCLORAMA                     | House Hang Position  |
| 51   | 34' - 2"  | BLACKOUT CURTAIN                    | House Hang Position  |



# NOTES

- HOUSE TEASER, MAIN CURTAIN, ELECTRICS & SHELL STORAGE LINESSETS ARE PERMANENT
- THE HOUSE TEASER MAY NOT BE TRIMMED OUT HIGHER THAN 24" FROM THE BOTTOM OF THE TEASER TO THE DECK
- SHELL PIECES STORED ON DECK CANNOT LEAVE THE STAGE, ALTHOUGH THEY MAY BE SHIFTED IF NECESSARY

## SEATING CAPACITY

824 ORCHESTRA, 557 BALCONY = 1381 TOTAL  
+60 w/ ORCHESTRA PIT EXTENSION  
1441 TOTAL w/ EXTENSION  
16 HANDICAP ACCESSIBLE LOCATIONS  
STAGE CAPACITY: 200 SEATED, 350 STANDING

## ADDRESS

315 W. Broadway, Louisville, KY 40202



THE W.L. LYONS  
BROWN THEATRE

SUBJECT  
GROUND PLAN

DATE  
9/3/2021

SCALE  
1/4" = 1'

VERSION  
TEMPLATE

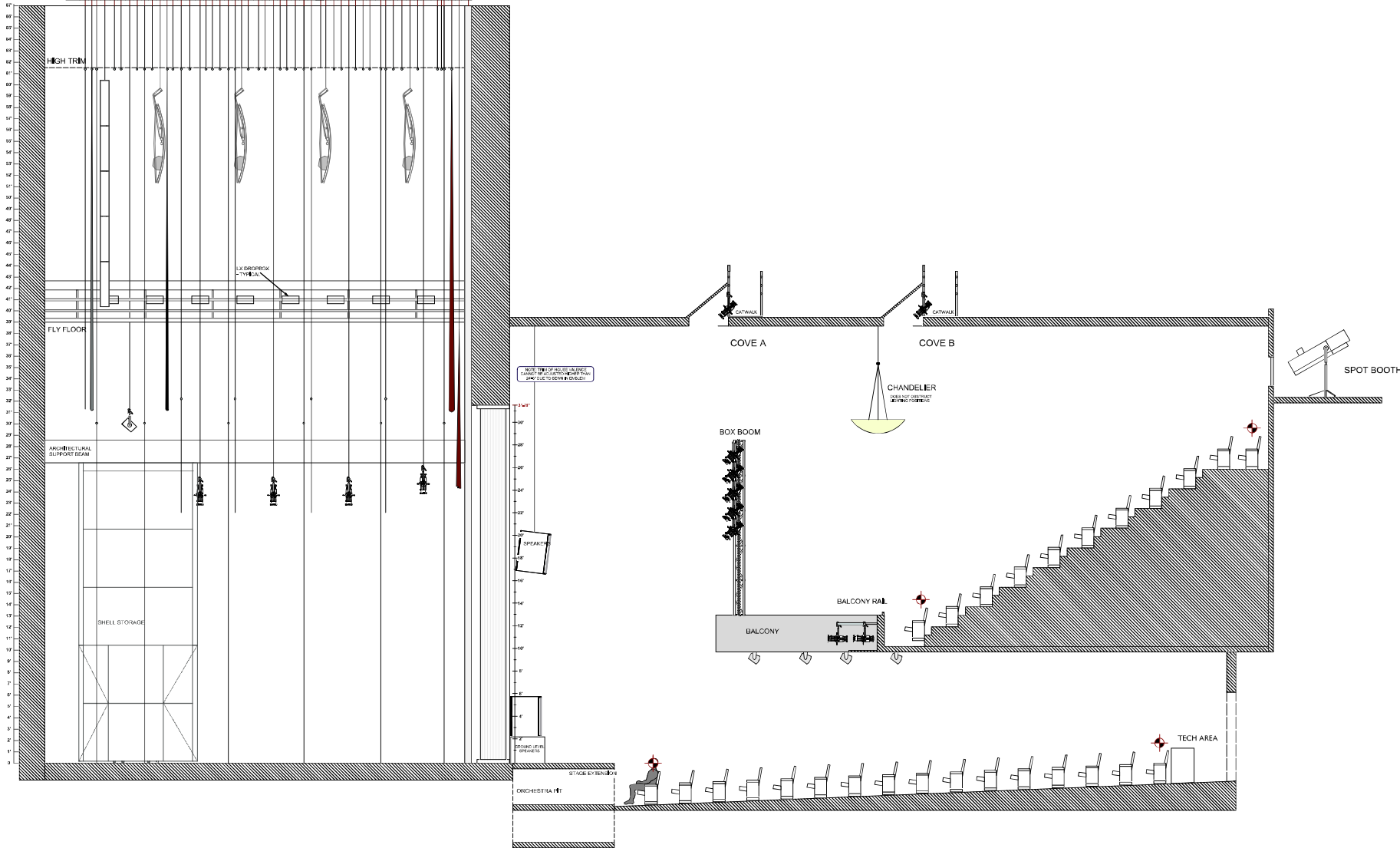
PLATE #  
1 of 4







| #   | ITEM     | UB # | NO. | NOTE |
|-----|----------|------|-----|------|
| 1   | BLACKOUT | 100  | 1   | FLAT |
| 2   | BLACKOUT | 100  | 2   | FLAT |
| 3   | BLACKOUT | 100  | 3   | FLAT |
| 4   | BLACKOUT | 100  | 4   | FLAT |
| 5   | BLACKOUT | 100  | 5   | FLAT |
| 6   | BLACKOUT | 100  | 6   | FLAT |
| 7   | BLACKOUT | 100  | 7   | FLAT |
| 8   | BLACKOUT | 100  | 8   | FLAT |
| 9   | BLACKOUT | 100  | 9   | FLAT |
| 10  | BLACKOUT | 100  | 10  | FLAT |
| 11  | BLACKOUT | 100  | 11  | FLAT |
| 12  | BLACKOUT | 100  | 12  | FLAT |
| 13  | BLACKOUT | 100  | 13  | FLAT |
| 14  | BLACKOUT | 100  | 14  | FLAT |
| 15  | BLACKOUT | 100  | 15  | FLAT |
| 16  | BLACKOUT | 100  | 16  | FLAT |
| 17  | BLACKOUT | 100  | 17  | FLAT |
| 18  | BLACKOUT | 100  | 18  | FLAT |
| 19  | BLACKOUT | 100  | 19  | FLAT |
| 20  | BLACKOUT | 100  | 20  | FLAT |
| 21  | BLACKOUT | 100  | 21  | FLAT |
| 22  | BLACKOUT | 100  | 22  | FLAT |
| 23  | BLACKOUT | 100  | 23  | FLAT |
| 24  | BLACKOUT | 100  | 24  | FLAT |
| 25  | BLACKOUT | 100  | 25  | FLAT |
| 26  | BLACKOUT | 100  | 26  | FLAT |
| 27  | BLACKOUT | 100  | 27  | FLAT |
| 28  | BLACKOUT | 100  | 28  | FLAT |
| 29  | BLACKOUT | 100  | 29  | FLAT |
| 30  | BLACKOUT | 100  | 30  | FLAT |
| 31  | BLACKOUT | 100  | 31  | FLAT |
| 32  | BLACKOUT | 100  | 32  | FLAT |
| 33  | BLACKOUT | 100  | 33  | FLAT |
| 34  | BLACKOUT | 100  | 34  | FLAT |
| 35  | BLACKOUT | 100  | 35  | FLAT |
| 36  | BLACKOUT | 100  | 36  | FLAT |
| 37  | BLACKOUT | 100  | 37  | FLAT |
| 38  | BLACKOUT | 100  | 38  | FLAT |
| 39  | BLACKOUT | 100  | 39  | FLAT |
| 40  | BLACKOUT | 100  | 40  | FLAT |
| 41  | BLACKOUT | 100  | 41  | FLAT |
| 42  | BLACKOUT | 100  | 42  | FLAT |
| 43  | BLACKOUT | 100  | 43  | FLAT |
| 44  | BLACKOUT | 100  | 44  | FLAT |
| 45  | BLACKOUT | 100  | 45  | FLAT |
| 46  | BLACKOUT | 100  | 46  | FLAT |
| 47  | BLACKOUT | 100  | 47  | FLAT |
| 48  | BLACKOUT | 100  | 48  | FLAT |
| 49  | BLACKOUT | 100  | 49  | FLAT |
| 50  | BLACKOUT | 100  | 50  | FLAT |
| 51  | BLACKOUT | 100  | 51  | FLAT |
| 52  | BLACKOUT | 100  | 52  | FLAT |
| 53  | BLACKOUT | 100  | 53  | FLAT |
| 54  | BLACKOUT | 100  | 54  | FLAT |
| 55  | BLACKOUT | 100  | 55  | FLAT |
| 56  | BLACKOUT | 100  | 56  | FLAT |
| 57  | BLACKOUT | 100  | 57  | FLAT |
| 58  | BLACKOUT | 100  | 58  | FLAT |
| 59  | BLACKOUT | 100  | 59  | FLAT |
| 60  | BLACKOUT | 100  | 60  | FLAT |
| 61  | BLACKOUT | 100  | 61  | FLAT |
| 62  | BLACKOUT | 100  | 62  | FLAT |
| 63  | BLACKOUT | 100  | 63  | FLAT |
| 64  | BLACKOUT | 100  | 64  | FLAT |
| 65  | BLACKOUT | 100  | 65  | FLAT |
| 66  | BLACKOUT | 100  | 66  | FLAT |
| 67  | BLACKOUT | 100  | 67  | FLAT |
| 68  | BLACKOUT | 100  | 68  | FLAT |
| 69  | BLACKOUT | 100  | 69  | FLAT |
| 70  | BLACKOUT | 100  | 70  | FLAT |
| 71  | BLACKOUT | 100  | 71  | FLAT |
| 72  | BLACKOUT | 100  | 72  | FLAT |
| 73  | BLACKOUT | 100  | 73  | FLAT |
| 74  | BLACKOUT | 100  | 74  | FLAT |
| 75  | BLACKOUT | 100  | 75  | FLAT |
| 76  | BLACKOUT | 100  | 76  | FLAT |
| 77  | BLACKOUT | 100  | 77  | FLAT |
| 78  | BLACKOUT | 100  | 78  | FLAT |
| 79  | BLACKOUT | 100  | 79  | FLAT |
| 80  | BLACKOUT | 100  | 80  | FLAT |
| 81  | BLACKOUT | 100  | 81  | FLAT |
| 82  | BLACKOUT | 100  | 82  | FLAT |
| 83  | BLACKOUT | 100  | 83  | FLAT |
| 84  | BLACKOUT | 100  | 84  | FLAT |
| 85  | BLACKOUT | 100  | 85  | FLAT |
| 86  | BLACKOUT | 100  | 86  | FLAT |
| 87  | BLACKOUT | 100  | 87  | FLAT |
| 88  | BLACKOUT | 100  | 88  | FLAT |
| 89  | BLACKOUT | 100  | 89  | FLAT |
| 90  | BLACKOUT | 100  | 90  | FLAT |
| 91  | BLACKOUT | 100  | 91  | FLAT |
| 92  | BLACKOUT | 100  | 92  | FLAT |
| 93  | BLACKOUT | 100  | 93  | FLAT |
| 94  | BLACKOUT | 100  | 94  | FLAT |
| 95  | BLACKOUT | 100  | 95  | FLAT |
| 96  | BLACKOUT | 100  | 96  | FLAT |
| 97  | BLACKOUT | 100  | 97  | FLAT |
| 98  | BLACKOUT | 100  | 98  | FLAT |
| 99  | BLACKOUT | 100  | 99  | FLAT |
| 100 | BLACKOUT | 100  | 100 | FLAT |



#### NOTES

- HOUSE TEASER, MAIN CURTAIN, ELECTRICS & SHELL STORAGE LINESETS ARE PERMANENT
- THE HOUSE TEASER MAY NOT BE TRIMMED OUT HIGHER THAN 24" FROM THE BOTTOM OF THE TEASER TO THE DECK
- LEGS & BORDERS DRAWN IN REP HANG & MAY BE SHIFTED AS NEEDED
- SHELL PIECES STORED ON DECK CANNOT LEAVE THE STAGE, ALTHOUGH THEY MAY BE SHIFTED IF NECESSARY

#### SEATING CAPACITY

824 ORCHESTRA, 557 BALCONY = 1381 TOTAL  
 +50 w/ ORCHESTRA PIT EXTENSION  
 1441 TOTAL w/ EXTENSION  
 16 HANDICAP ACCESSIBLE LOCATIONS  
 STAGE CAPACITY: 200 SEATED, 350 STANDING

#### ADDRESS

315 W. Broadway, Louisville, KY 40202



THE W.L. LYONS  
BROWN THEATRE

SUBJECT  
C/L SECTION

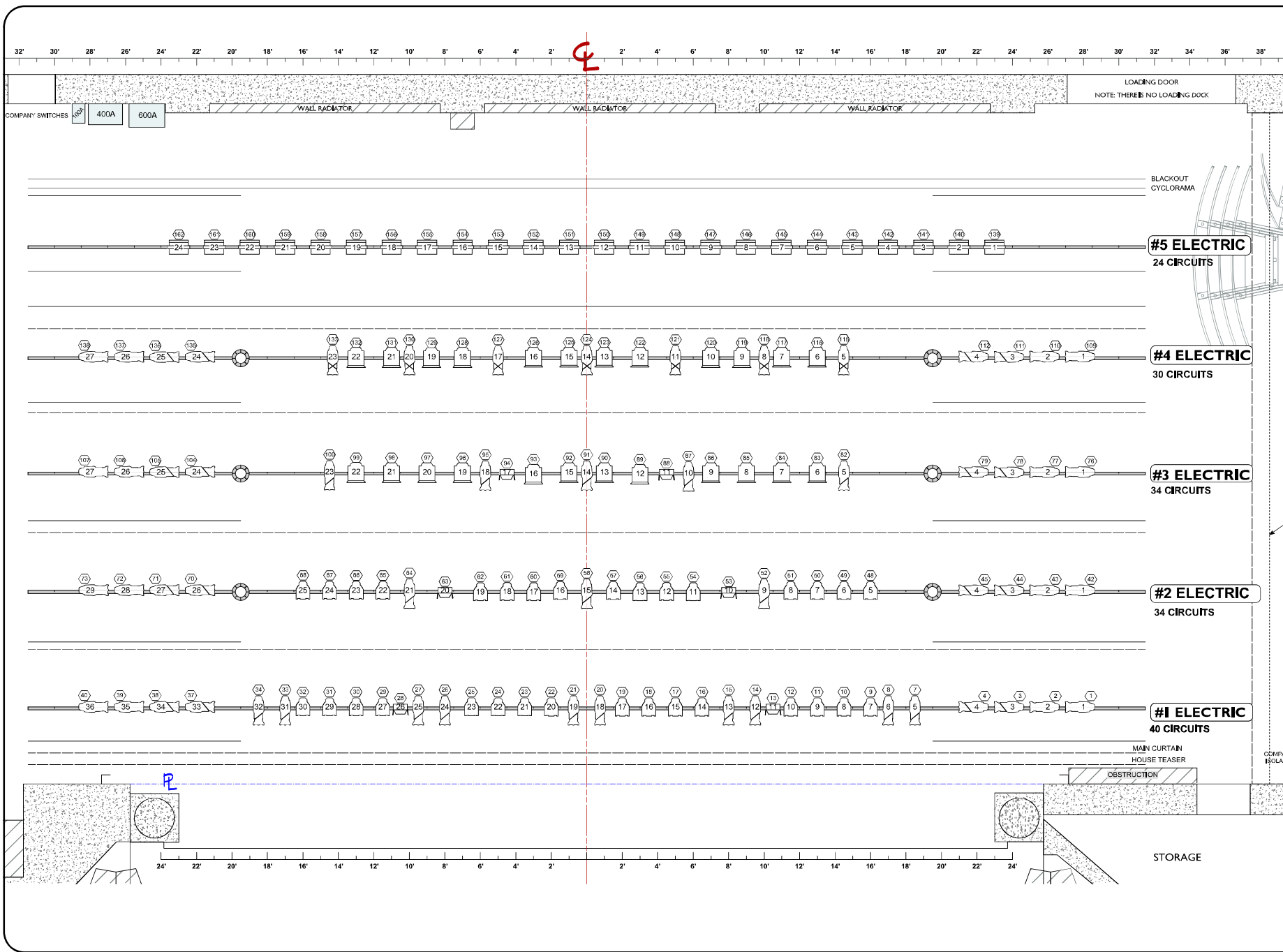
DATE  
9/3/2021

SCALE  
1/4" = 1'

VERSION  
HOUSE  
HANG

PLATE #  
2 of 4





### FIXTURE KEY & INVENTORY

ALL S4 CAPS ARE 575W MAX.  
5750 CAPS AVAILABLE FOR LEXOS  
x176 TOTAL ETC S4 BODIES

- BABEL COUNTS**
- x10 ETC Source Four 10 Degree 575W HPL
  - x12 ETC Source Four 14 Degree 575W HPL
  - x73 ETC Source Four 19 Degree 575W HPL
  - x54 ETC Source Four 26 Degree 575W HPL
  - x37 ETC Source Four 36 Degree 575W HPL
  - x4 ETC Source Four 50 Degree 575W HPL
  - x32 TOTAL ETC S4 PAR BODIES
  - ETC Source Four PAR VNSP 575W HPL
  - ETC Source Four PAR NSP 575W HPL
  - ETC Source Four PAR MFL 575W HPL
  - ETC Source Four PAR WFL 575W HPL
  - x24 Aliman 8" Fresnel 2000W BTR
  - x24 Aliman Single Cell Cyc Lite 1000W
  - x6 Aliman Q-Lite Jr. 300W +650W
  - x4 Worklight Metal Halide
  - x2 Colortran Followspot 2000W

### TYPICAL



### NOTES

- HOUSE PLOT IS PATCHED 14x1 IN CONSOLE
- BOX BOOM HANG IS PERMANENT BUT CAN BE ADJUSTED IF NECESSARY
- HOUSE TEASER, MAIN CURTAIN, ELECTRICS & SHELL STORAGE LINESETS ARE PERMANENT
- THE HOUSE TEASER MAY NOT BE TRIMMED OUT HIGHER THAN 24" FROM THE BOTTOM OF THE TEASER TO THE DECK
- SHELL PIECES STORED ON DECK CANNOT LEAVE THE STAGE, ALTHOUGH THEY MAY BE SHIFTED IF NECESSARY

### SEATING CAPACITY

824 ORCHESTRA, 557 BALCONY = 1381 TOTAL  
+60 w/ ORCHESTRA PIT EXTENSION  
1441 TOTAL w/ EXTENSION  
16 HANDICAP ACCESSIBLE LOCATIONS

### STAGE CAPACITY

200 SEATED, 350 STANDING

### ADDRESS

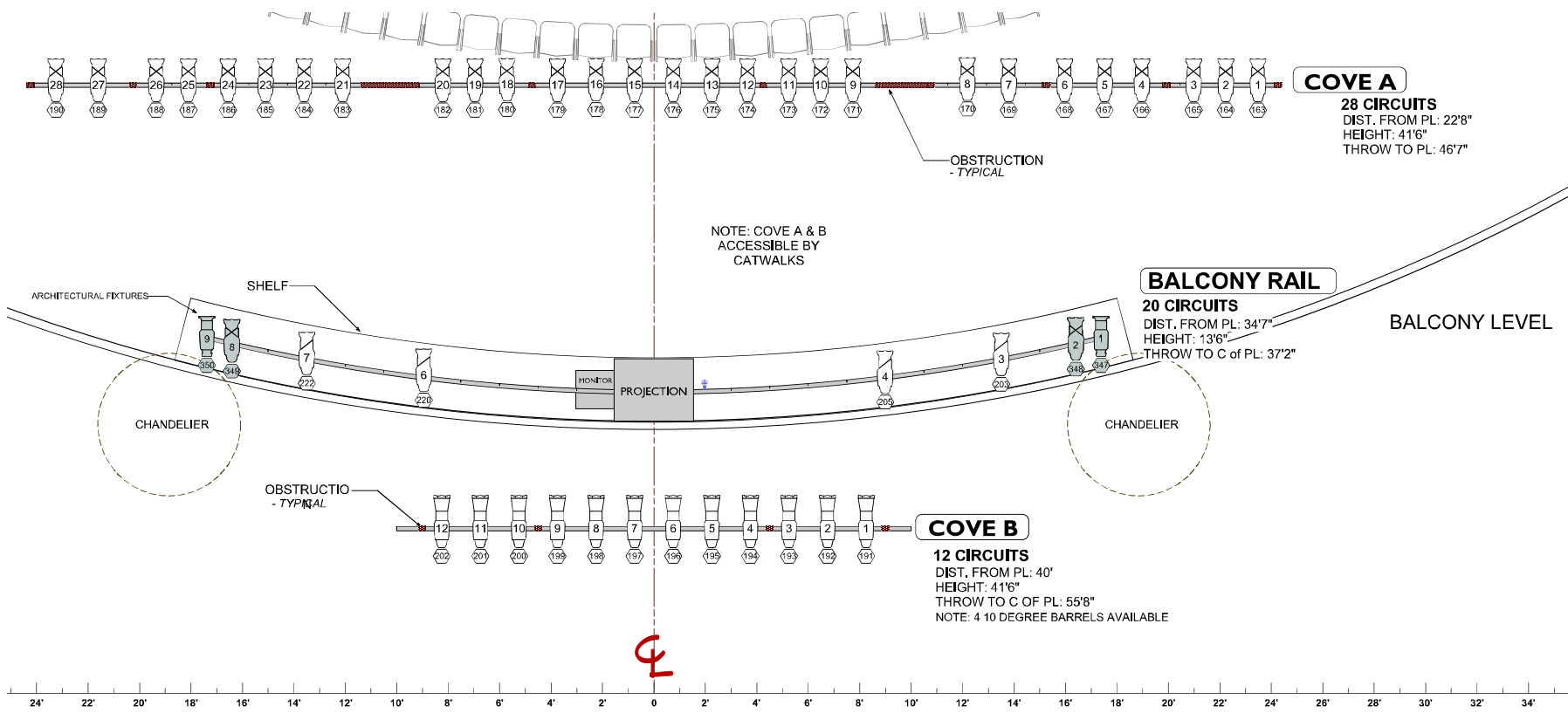
315 W. Broadway, Louisville, KY 40202



### THE W.L. LYONS BROWN THEATRE

### SUBJECT HOUSE LIGHT PLOT

|                          |                   |
|--------------------------|-------------------|
| DATE<br>9/3/2021         | SCALE<br>N/A      |
| VERSION<br>STAGE<br>HANG | PLATE #<br>4 of 4 |



# **FIXTURE KEY & INVENTORY**

ALL S4 CAPS ARE 575W MAX  
5,750 CAPS AVAILABLE FOR LEKOS

x176 TOTAL ETC S4 BODIES

## **BARREL COUNTS**

- x10 ETC Source Four 10 Degree 575W HPL
- x12 ETC Source Four 14 Degree 575W HPL
- x73 ETC Source Four 19 Degree 575W HPL
- x54 ETC Source Four 26 Degree 575W HPL
- x37 ETC Source Four 36 Degree 575W HPL
- x1 ETC Source Four 50 Degree 575W HPL

## **x32 TOTAL ETC S4 PAR BODIES**

- ETC Source Four PAR VNSP 575W HPL
- ETC Source Four PAR NSP 575W HPL
- ETC Source Four PAR MFL 575W HPL
- ETC Source Four PAR WFL 575W HPL

- x24 Altman 8" Fresnel 2000W BTR
- x24 Altman Single Cell Cyc Lite 1000W
- x6 Altman Co-Lite Jr. 300W = 650W
- x4 Worklight Metal Hinge
- x2 Colortran Followspot 2000W

## **TYPICAL**



## **NOTES**

- HOUSE PLOT IS PATCHED 14x1 IN CONSOLE
- BOX BOOM HANG IS PERMANENT BUT CAN BE ADJUSTED IF NECESSARY
- HOUSE TEASER, MAIN CURTAIN, ELECTRICS & SHELL STORAGE LINESETS ARE PERMANENT
- THE HOUSE TEASER MAY NOT BE TRIMMED OUT HIGHER THAN 24" FROM THE BOTTOM OF THE TEASER TO THE DECK
- SHELL PIECES STORED ON DECK CANNOT LEAVE THE STAGE, ALTHOUGH THEY MAY BE SHIFTED IF NECESSARY

## **SEATING CAPACITY**

824 ORCHESTRA, 557 BALCONY = 1381 TOTAL  
+55 w/ ORCHESTRA PIT EXTENSION  
1441 TOTAL w/ EXTENSION  
16 HANDICAP ACCESSIBLE LOCATIONS

STAGE CAPACITY: 200 SEATED, 350 STANDING

## **ADDRESS**

315 W. Broadway, Louisville, KY 40202



**THE W.L. LYONS BROWN THEATRE**

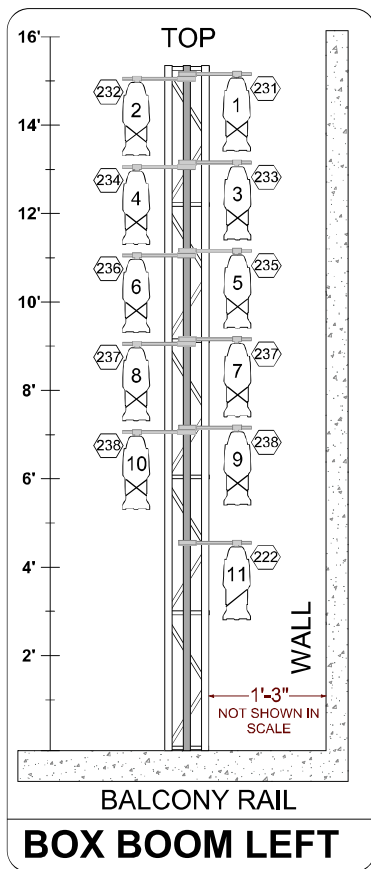
**SUBJECT**  
**HOUSE LIGHT PLOT**

**DATE**  
9/3/2021

**SCALE**  
1/2" = 1'

**VERSION**  
FOH HANG

**PLATE #**  
4 of 4



### 8 CIRCUITS

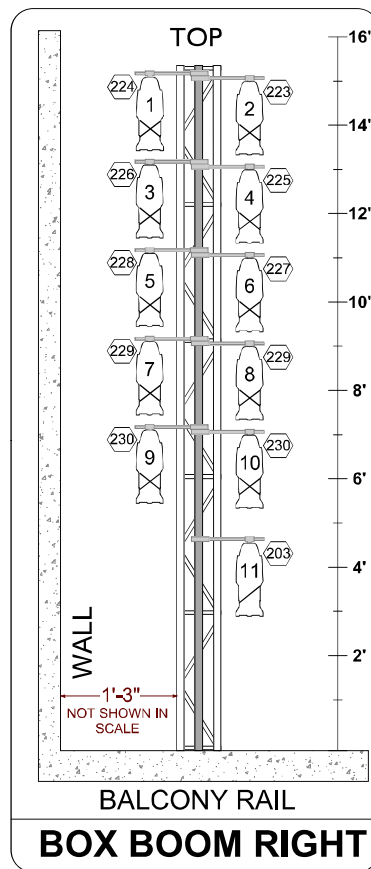
DIST. FROM PL: 23'3"

DIST. FROM CL: 41'

THROW TO DSC PL: 49'4"

HEIGHT (RELATIVE TO STAGE DECK)

13'1" - 28'7"



### 8 CIRCUITS

DIST. FROM PL: 23'3"

DIST. FROM CL: 41'

HEIGHT (RELATIVE TO STAGE DECK)

13'1" - 28'7"

THROW TO PL CENTER: 49'4"

### BOX BOOM NOTES

- BOX BOOM HANG IS REP
- ALL MEASUREMENTS TAKEN FROM BALC RAIL LEDGE
- INSTRUMENTS HUNG FROM 15" SIDEARMS
- CIRCUIT PIGTAILS ARE 10". 2 PIGTAILS PER BOX
- IT IS POSSIBLE TO RUN EXTRA CIRCUITS TO THE BOX BOOMS FROM THE BALCONY RAIL
- NEAR SHOTS FROM THE BOXES TO THE STAGE TEND TO SCRAPE ARCHITECTURE & SPEAKERS - BEWARE

### FIXTURE KEY & INVENTORY

ALL S4 CAPS ARE 575W MAX

5750 CAPS AVAILABLE FOR LEKOS

**TOTAL ETC S4 BODIES**

**BARREL COUNTS**

x10 ETC Source Four 10 Degree

575W HPL

x12 ETC Source Four 14 Degree

575W HPL

x73 ETC Source Four 19 Degree

575W HPL

x54 ETC Source Four 26 Degree

575W HPL

x37 ETC Source Four 36 Degree

575W HPL

x1 ETC Source Four 50 Degree

575W HPL

**TOTAL ETC S4 PAR BODIES**

ETC Source Four PAR VNSP

575W HPL

ETC Source Four PAR NSP

575W HPL

ETC Source Four PAR MFL

575W HPL

ETC Source Four PAR WFL

575W HPL

x24 Altman 8" Fresnel

2000W BTR

x24 Altman Single Cell Cyc Lite

1000W

x6 Altman G4 Lite Jr.

300W-650W

x4 Worklight

Metal Hinge

x2 Colortran Followspot

2000W

### TYPICAL



### NOTES

- HOUSE PLOT IS PATCHED 14x11 IN CONSOLE
- BOX BOOM HANG IS PERMANENT BUT CAN BE ADJUSTED IF NECESSARY
- HOUSE TEASER, MAIN CURTAIN, ELECTRICS & SHELL STORAGE LINESETS ARE PERMANENT
- THE HOUSE TEASER MAY NOT BE TRIMMED OUT HIGHER THAN 24" FROM THE BOTTOM OF THE TEASER TO THE DECK
- SHELL PIECES STORED ON DECK CANNOT LEAVE THE STAGE, ALTHOUGH THEY MAY BE SHIFTED IF NECESSARY

### SEATING CAPACITY

824 ORCHESTRA, 557 BALCONY = 1381 TOTAL  
+50 w/ ORCHESTRA PIT EXTENSION  
1441 TOTAL w/ EXTENSION  
16 HANDICAP ACCESSIBLE LOCATIONS  
STAGE CAPACITY: 200 SEATED, 350 STANDING

### ADDRESS

315 W. Broadway, Louisville, KY 40202



**THE W.L. LYONS BROWN THEATRE**

**SUBJECT**  
**HOUSE LIGHT PLOT**

**DATE**  
9/3/2021

**SCALE**  
3/4" = 1'

**VERSION**  
BOX BOOMS

**HANG**

**PLATE #**  
4 of 4